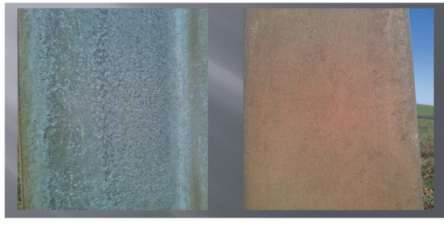


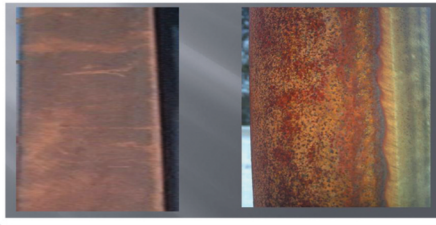
## Current Substrate Conditions

CONDITION	COMPANY RATING GUIDE	RATING DEFINITION
Non-deteriorated	R - 1	0 to 0.1% rust Coating almost intact; red rust covers less than 0.1% of all surfaces, Re-evaluate in 6–12 years
Slightly to moderately deteriorated	R - 2	0.1 to 1% rust Coating somewhat weathered; may show slight staining or blistering; after stains are wiped off, less than 1% of surface area shows rust, blistering, loose mill scale, or loose paint film. Re-evaluate in 3–6 years.
Deteriorated	R - 3	1 to 10% rust Coating thoroughly weathered, blistered, or stained, up to 10% of surface area is covered with rust, rust blisters, hard scale or loose paint film, very little pitting visible. Needs attention in 1–3 years
Severely deteriorated	R - 4	10 to 50% rust. Large portion of surface is covered with rust, pits, nodules, and non-adherent paint. Pitting is visible. Needs attention within 1 year
Totally deteriorated	R - 5	Over 50% rust. Needs immediate attention

**Surface Condition  
Aged Galvanized Steel  
Rating R-1 & R-2**



**Surface Condition  
Aged Galvanized Steel  
Rating R-3 & R-4**



**Surface Condition  
Aged Galvanized Steel  
Rating R-5**

